

{Portable}

# HSE Series Electric - Direct Drive

This compact, portable, hot water pressure washer offers quiet operation and is suitable for a wide variety of industrial applications.



HSE-1002-OM10

### Additional Features:

- ✓ Totally enclosed fan-cooled electric motor with manual thermal overload protection
- ✓ Direct drive triplex piston General pump with ceramic plungers and forged brass manifold
- ✓ Thermal relief valve
- ✓ Stainless-steel and brass unloader valve
- ✓ High pressure detergent injection (low pressure on HSE-1002-OM11)
- ✓ Complete system diagnostic board
- ✓ Solid state electronic ignition
- ✓ Float tank (N/A on HSE-1002-OM11)
- ✓ Pressure and high limit safety controls
- ✓ No. 1 or No. 2 diesel or kerosene fired burner
- ✓ Polyethylene burner fuel tank
- ✓ Temperature rise 150°F/66°C above ambient, maximum outlet temperature is 200°F
- ✓ Water output temperature is 190°-200°F (Excludes HSE-1002-SM10)
- ✓ Water output temperature for "wet" steam is approximately 250°F (HSE-1002-SM10)
- ✓ Operates at 650-PSI in "wet" steam mode (HSE-1002-SM10)
- ✓ Easy coil drain
- ✓ Electric cord hanger
- ✓ Powder coated steel gun/wand holder
- ✓ Solid steel threaded axles
- ✓ Pneumatic tires with tubes (4)
- ✓ Locking tire brake
- ✓ 50-foot x 3/8-inch steel wire-braided pressure hose with screw connects, swivel and bend restrictors
- ✓ Professional-grade insulated trigger gun with safety lock-off
- ✓ Adjustable pressure insulated dual lance with 15-degree fixed and detergent nozzle



High quality fuel filter/water separator ensures clean fuel supply

Energy efficient top-fired powder coated heat exchanger designed for convenient



troubleshooting and easy maintenance



Reinforced powder coated steel tube frame with center balanced lifting hook

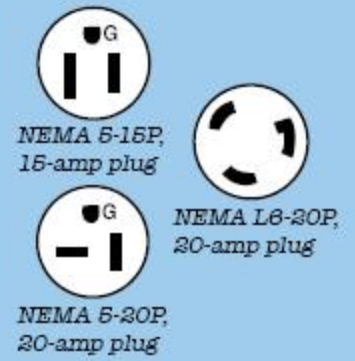
35-foot power cord with in-line GFCI which meets required CSA certification



Powder coated steel hose reel mounting bracket

## Specifications:

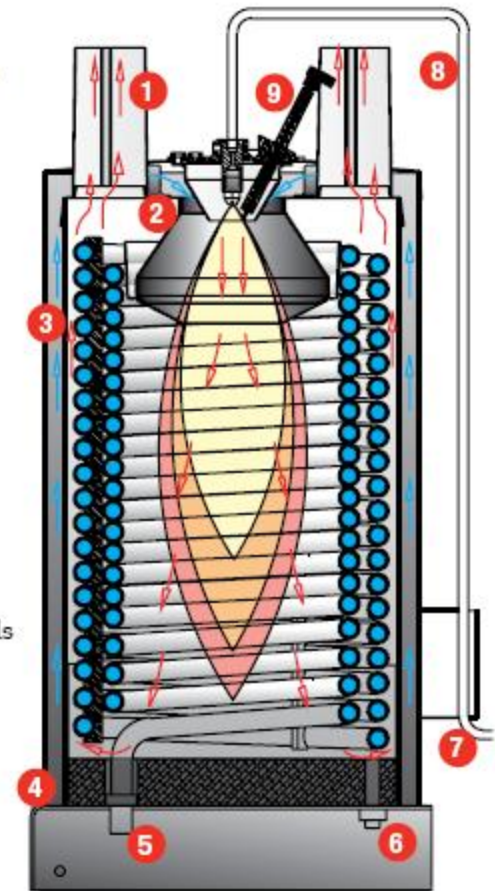
Model #	HSE-1002-0M11*	HSE-1002-0M10	HSE-1002-SM10^	HSE-1502-0M10	HSE-2003-0M10
Pressure (psi)	1000	1000	1000	1500	2000
Flow (gpm)	2.0	2.0	2.0	2.0	2.8
Motor	120V, 1Ø, 15.0A	120V, 1Ø, 15.0A	120V, 1Ø, 15.0A	120V, 1Ø, 19.0A	230V, 1Ø, 18.0A
Horsepower	1.5	1.5	1.5	2.0	4.0
Plug type	NEMA 5-15P	NEMA 5-15P	NEMA 5-15P	NEMA 5-20P	NEMA L6-20P
Burner fuel tank cap.	4.0 gallon	4.0 gallon	4.0 gallon	4.0 gallon	4.0 gallon
Burner fuel cons.	1.33 gph	1.33 gph	1.33 gph	1.33 gph	1.33 gph
Dim. (LxWxH)	34in.x29in.x33in.	34in.x29in.x33in.	34in.x29in.x33in.	34in.x29in.x33in.	34in.x29in.x33in.
Shipping weight	368 lbs.	368 lbs.	368 lbs.	373 lbs.	393 lbs.
Net weight	245 lbs.	245 lbs.	245 lbs.	250 lbs.	270 lbs.



\*Low pressure detergent injection.  
^Combination wet steam cleaner/pressure washer.



HSE-1502-0M10



### BURNER DESIGN

1. Large capacity exhaust tubes allow proper exhausting of combustion gases.
2. When troubleshooting a burner problem, the spark can easily be checked within seconds through the convenient sight glass.
3. Continuous wrap tubing coil eliminates butt welds which can cause leaks. The coil is lightweight and designed for easy replacement.
4. The insulation pad is designed for easy replacement and durability.
5. Coil inlet/outlet connections with convenient coil drain, allows for easy draining of all water in coil to prevent freezing.
6. The combustion chamber drain allows for easy draining of water or fuel build-up.
7. Incoming air flows between outside wrap and inner wrap eliminating the need for coil insulation.
8. Single wire-braided fuel hose prevents leakage, protects the system and won't crack or kink.
9. Electrodes are at the top for ease of maintenance.

### Options:

- HX-0050, HX-0051 Auto start/stop - When trigger gun is released, the timer will turn unit off; when trigger gun is pulled unit will restart
- HX-0052 - HX-0054 Auto start/stop-steam - Auto start/stop option - When trigger gun is released, the timer will turn unit off; when trigger gun is pulled unit will restart; Steam option - reduces pressure to 350-PSI by adjusting unloader valve counter-clockwise, spray temperatures will rise 240°F over ambient with a maximum of 300°F
- HX-0055, HX-0056 Auto start/stop-CAD cell - Auto start/stop option - When trigger gun is released, the timer will turn unit off; when trigger gun is pulled unit will restart; CAD cell option monitors burner for proper ignition
- HX-0057 - HX-0059 Auto start/stop-steam/CAD cell - Auto start/stop option - When trigger gun is released, the timer will turn unit off; when trigger gun is pulled unit will restart; Steam option - reduces pressure to 350-PSI by adjusting unloader valve counter-clockwise, spray temperatures will rise 240°F over ambient with a maximum of 300°F; CAD cell option monitors burner for proper ignition
- HX-0161 Hour meter - Displays number of hours unit has been in operation
- TX-1004-W Puncture-proof tires - Tires are flat-free, maintenance-free and non-marking, 10-inch, white hub, four tires

Model #	HX-0050	HX-0051	HX-0052	HX-0053	HX-0054	HX-0055	HX-0056	HX-0057	HX-0058	HX-0059	HX-0161	TX-1004-W
HSE-1002-0M11	●		●			●		●			●	●
HSE-1002-0M10	●		●			●		●			●	●
HSE-1002-SM10											●	●
HSE-1502-0M10	●			●		●			●		●	●
HSE-2003-0M10		●			●		●			●	●	●